



# Inclusivity in the Field of Smart Cities

---

Special Advisor to the Prime Minister

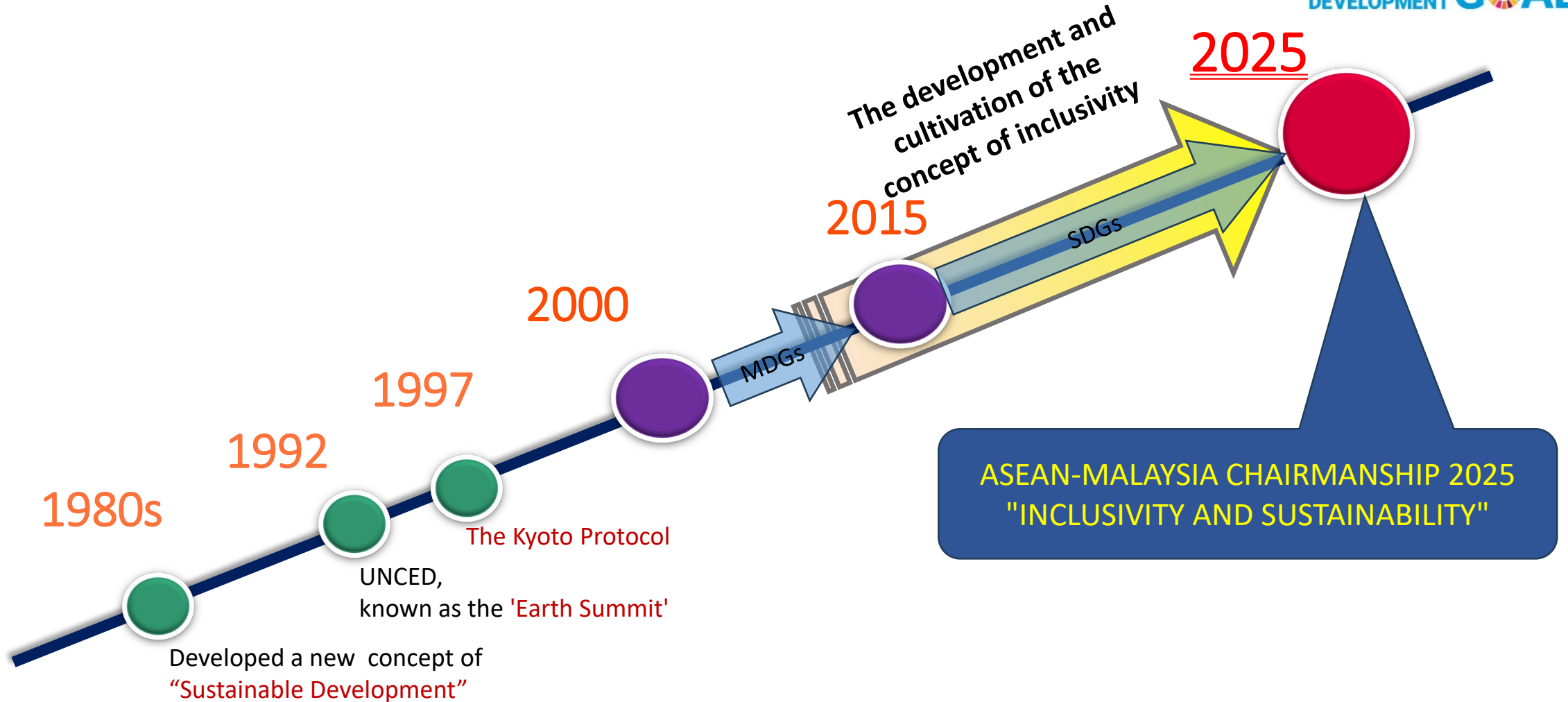
Mr. UNO Yoshimasa

November 10, 2025

# The 10-Year Milestone Since the Launch of the SDGs: Development and Cultivation of the Concept of *Inclusivity*

- In 2000, the Millennium Development Goals (MDGs) were established with 2015 as their target date.
- Subsequently, the Sustainable Development Goals (SDGs) were adopted in 2015 as their successor, extending beyond developing countries to include developed nations. This year marks the 10-year milestone.

SUSTAINABLE  
DEVELOPMENT GOALS



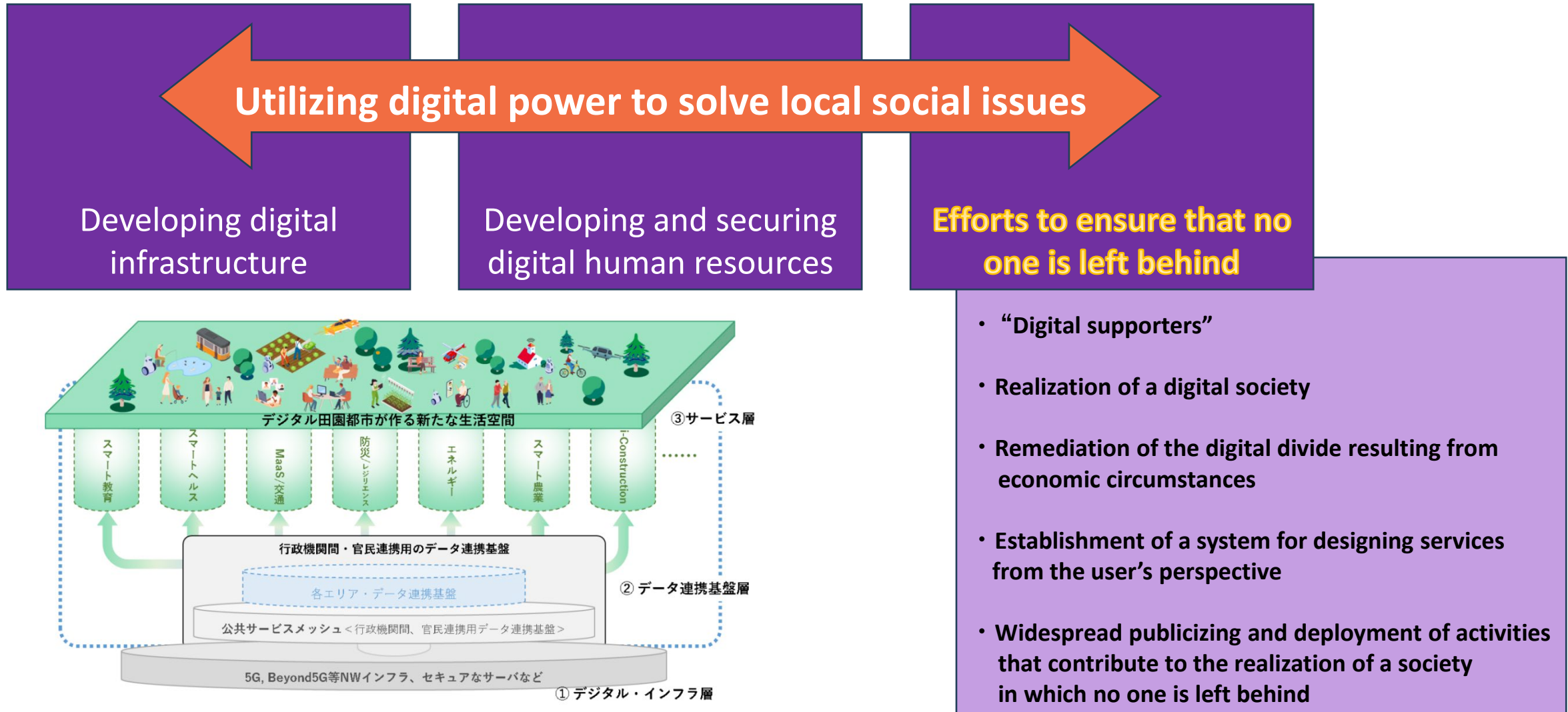
# The Importance of ICT and Data Utilization in Combination with Human Dignity: For a True “Smart City”

- Development of society and the economy requires an integrated approach combining both traditional hardware and software measures.
- When utilizing ICT and data, consideration for human dignity is essential, and is an indispensable perspective contributing to a true “smart city.”



# Example (1): Efforts to Ensure that the Vulnerable Are Not Left Behind

## ○Digital Garden City Nation concept





## Example (2): Support for SMEs and Startups



The Japanese government supports research and development by domestic start-ups and the commercialisation of its outcomes, thereby promoting innovation.

- Provision of subsidies for large-scale technology demonstration projects by startups
- Establishment of contact points to enable direct consultation with individuals working in each field, including construction technology, the ocean, land, rivers, sewerage, and roads

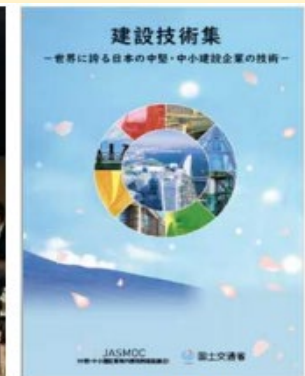
【Cabinet Office】

### Support for overseas expansion of small and medium-sized construction companies

The Japanese government supports the overseas expansion of medium-sized and small enterprises in the construction sector through the establishment of a council.



JASMOC総会



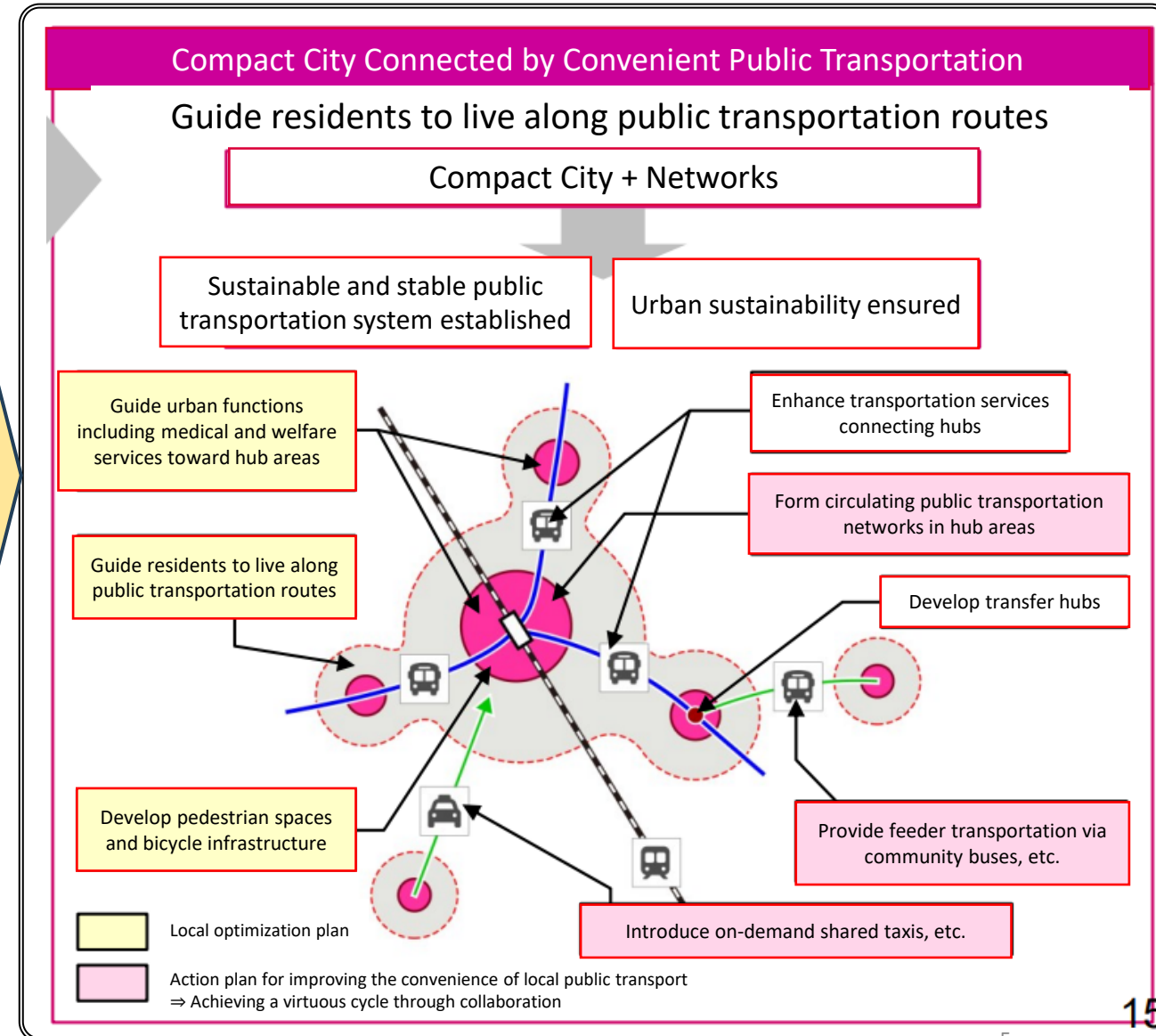
建設技術集

【Ministry of Land, Infrastructure, Transport and Tourism】

# Example (3): Efforts to Ensure That No City is Left Behind

## Compact Plus Network

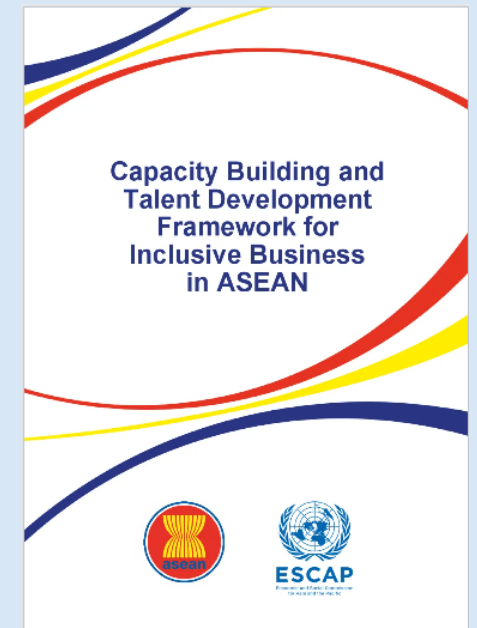
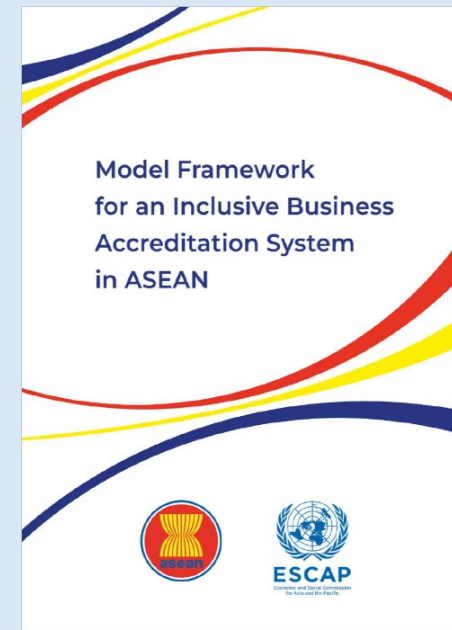
- (1) Use initiatives including the local optimization plan system to consolidate and guide where day-to-day services are provided and where residents live  
=>Population concentration (compact city)
- (2) Combine the restructuring of public transportation networks with community building



# Potential for Further Concrete ASEAN–Japan Cooperation Projects to Promote Inclusivity



ASEAN



## ● Country to Country

- Strengthen efforts for mutual development through exchange of information and knowledge among countries.

## ● Research Institution to Research Institution

- Create innovation not only through local government-led initiatives, but also through academia-led initiatives.
- Create a virtuous cycle for better policy-making by facilitating verification of policy effects.

## ● Region to Region

- Share know-how on listening to citizens' voices and reflecting them in policies by strengthening cooperation between local governments—which are closer to citizens than the central government—and use this to activate personnel exchanges between Japan and ASEAN.

## ● Person to Person / Company to Company

- Deepen mutual understanding through capacity building and human resource exchange, putting people—the target of every policy—in the leading role.
- Pursue inclusivity to develop business.



## Together toward an ideal future

- Even as population and social structures change in future, the following must remain unchanged:
  - People remain at the heart of society
  - Individuals are not left behind and can live with dignity
- Even as structures change, people must remain central and individuals must not be left behind.



THANK YOU

