

10 November 2025

Nihon Suido Consultants Co., Ltd.

Self-introduction

Inclusivity and Flood Monitoring System

General Manager of Philippine Branch
Overseas Supervisory Division,
Business Development Headquarters

TOBE Tatsuya

Self-introduction

Name:

TOBE Tatsuya (Mr.)

Position:

General Manager of Philippine Branch, Nihon Suido Consultants Co., Ltd.

Nationality:

Japan

Certifications:

Professional Engineer for Civil Engineering (Japan) in 2014

APEC Engineer for Civil Engineering in 2017

Education:

Master of Engineering (M.E.), Environmental Engineering, Graduate School of Engineering, Osaka University, Japan in 2006

Experience:

Professional engineer for water infrastructure with over 20 years' experience.



Company Introduction of Nihon Suido



500
professionals

66th
Established in 1959

70
countries

We are an engineering consultant company specializing in water and sewerage infrastructure.



We will provide total solution for Water-related Projects at Every Stage

Water Supply



Sewerage



Digital Transformation



Environment



Construction



Overseas



River



Machinery, Electricity, Plant



Architecture

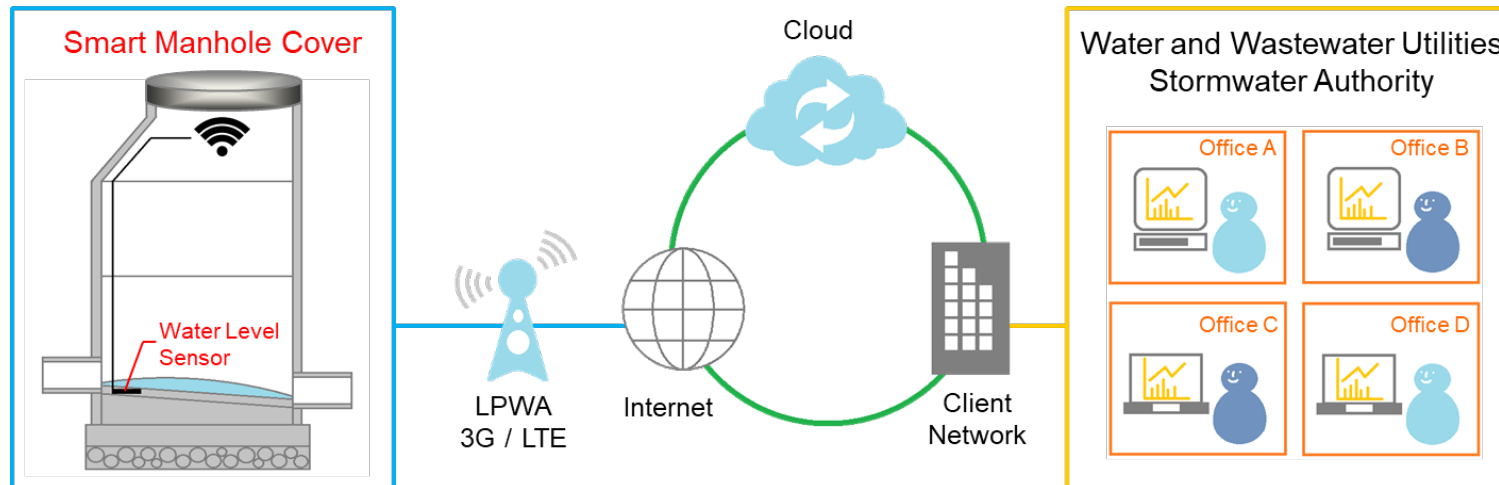


Structural Design



Smart JAMP Project in Davao, Philippines

- Project Name: Smart JAMP – Feasibility Study for Smart City (Disaster Prevention) in Davao City
- Period: June 2024 to March 2025
- Funded by: Ministry of Land, Infrastructure, Transport and Tourism (MLIT), Japan
- Counterpart in Philippines: City Government of Davao

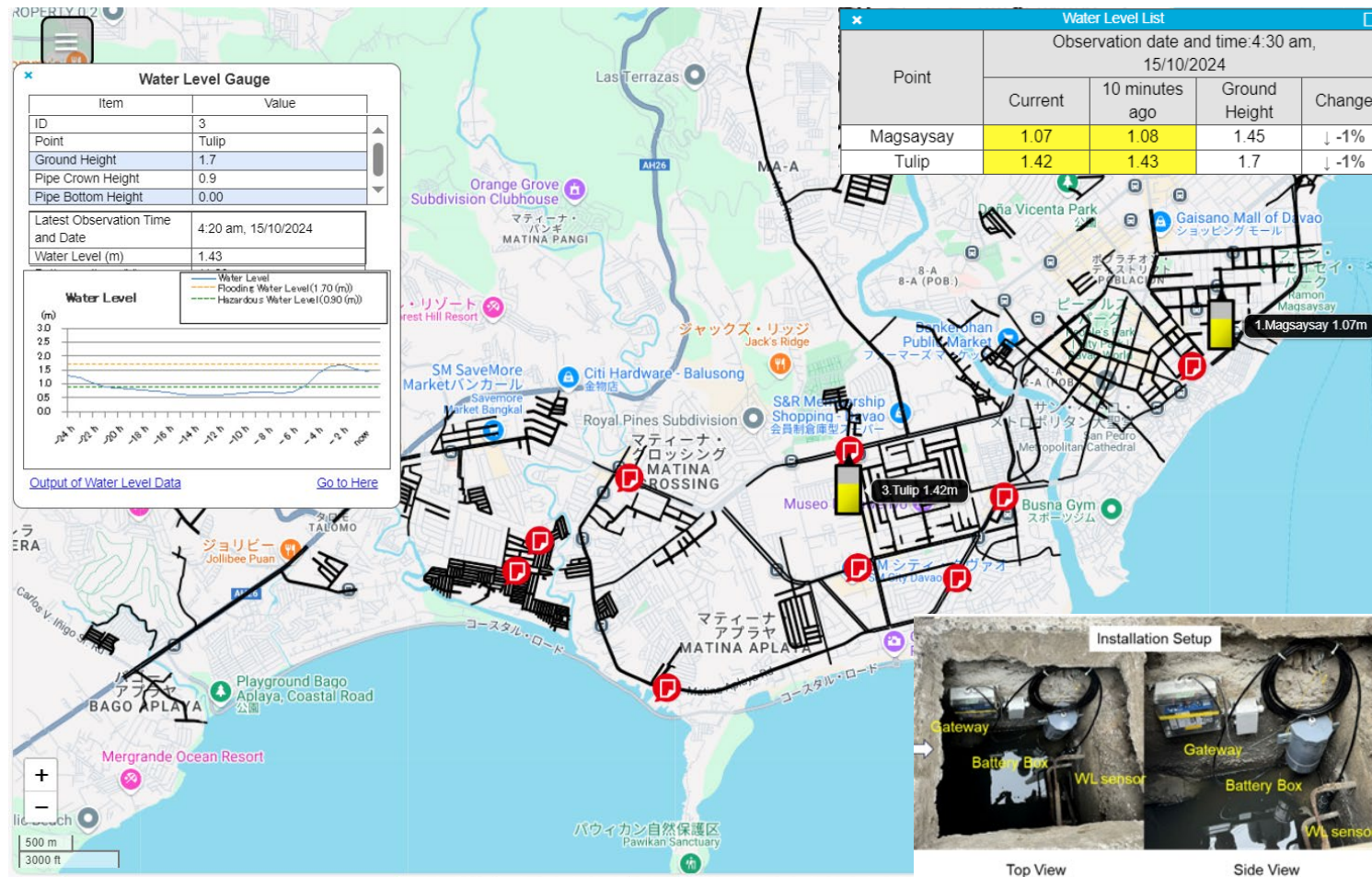


Flood Monitoring System



Flood Monitoring System for Davao City

Actual dashboard during the heavy flood on 8 Sep 2024



Alert Notification (E-mail)



Alert Symbol in Blitz-GIS

Water Level	Condition	Symbol
Flooding	Over Flooding Water Level (Ground Level)	
Hazardous	Over Hazardous Water Level (Pipe Crown Level)	
Normal	Water Flow over 80% of Pipe Crown Height	
	Water Flow over 20% of Pipe Crown Height	
	Water Flow below 20% of Pipe Crown Height	

Inclusivity and Flood Monitoring System



Appropriate Flood Response for All People

- Visualize and publicly disclose water level information of drainages in real-time.
- Ensure a rapid flood response and appropriate evacuation actions for all people, including the poor and people in vulnerable situations.

Resilient and Sustainable Infrastructure for All People

- Update stormwater master plans and related designs for flood control facilities.
- Promote maintenance and cleaning of drainages for flood mitigation according to actual sedimentation conditions.



SDG 11: Make cities and human settlements inclusive, safe, resilient and sustainable



Nihon Suido Consultants

Head Office:

Address. Shinjuku Square Tower, 6-22-1, Nishi-Shinjuku, Shinjuku-ku,
Tokyo 163-1122, Japan

TEL. +81-3-5323-6200 FAX. +81-3-5323-6480

URL. <https://www.nissuicon.co.jp/en/>