

10 November 2025

Nihon Suido Consultants Co., Ltd.

Real-time Stormwater Management System (Blitz-GIS)

General Manager of Philippine Branch
Overseas Supervisory Division
Business Development Headquarters

TOBE Tatsuya

Company Introduction of Nihon Suido



500
professionals

66th
Established in 1959

70
countries

We are an engineering consultant company specializing in water and sewerage infrastructure.



We will provide total solution for Water-related Projects at Every Stage

Water Supply



Sewerage



Digital Transformation



Environment



Construction



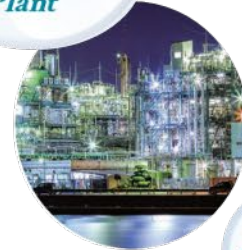
Overseas



River



Machinery, Electricity, Plant



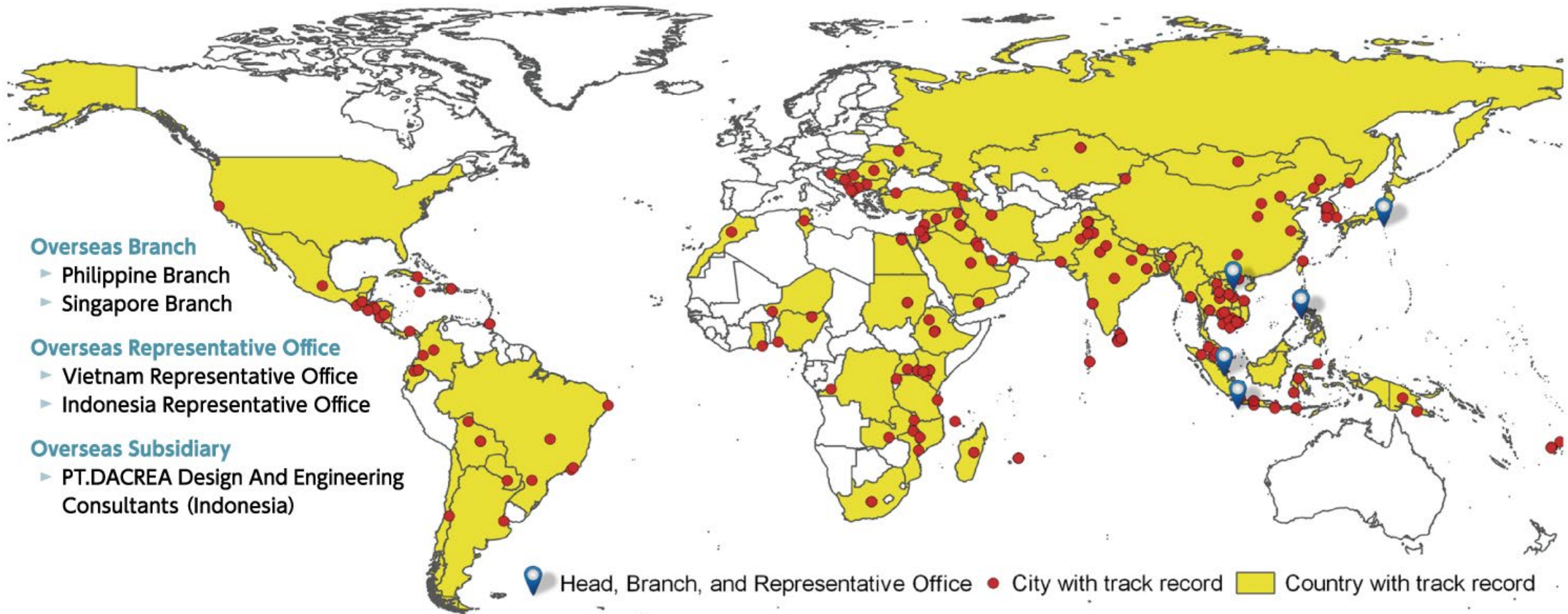
Architecture



Structural Design



Our Presence in the World



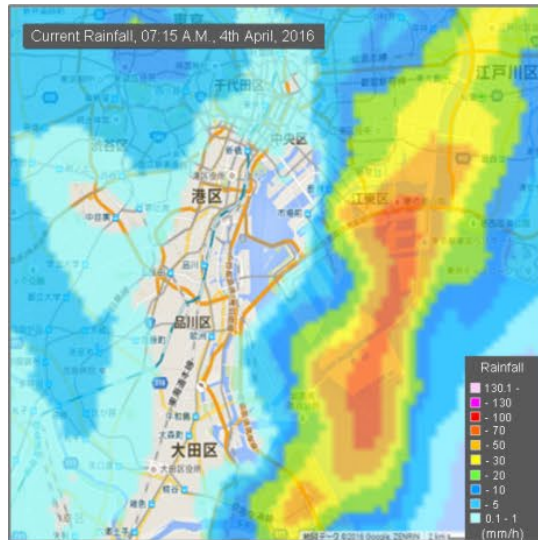
- Establishment Year : 1959
- Number of Staff : 655
- ISO 9001:2015, ISO 14001:2015, ISO/IEC 27001:2013, ISO 55001:2014 registered

(as of Dec 2024)

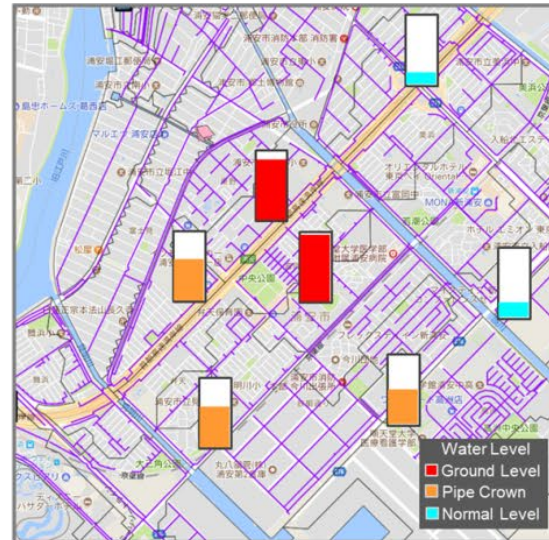
Our Innovative SMART Technology



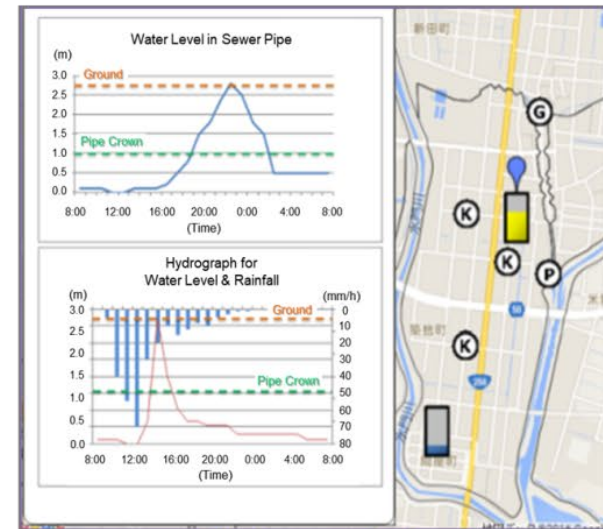
Real-time Stormwater Management System (Blitz-GIS)



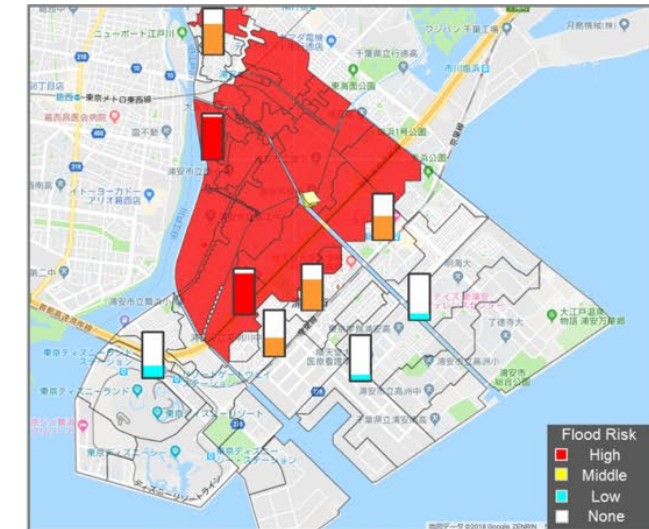
Rainfall Forecast
(Current and Forecasted Rainfall)



Water Level Forecast
(Current and Forecasted Water Level)

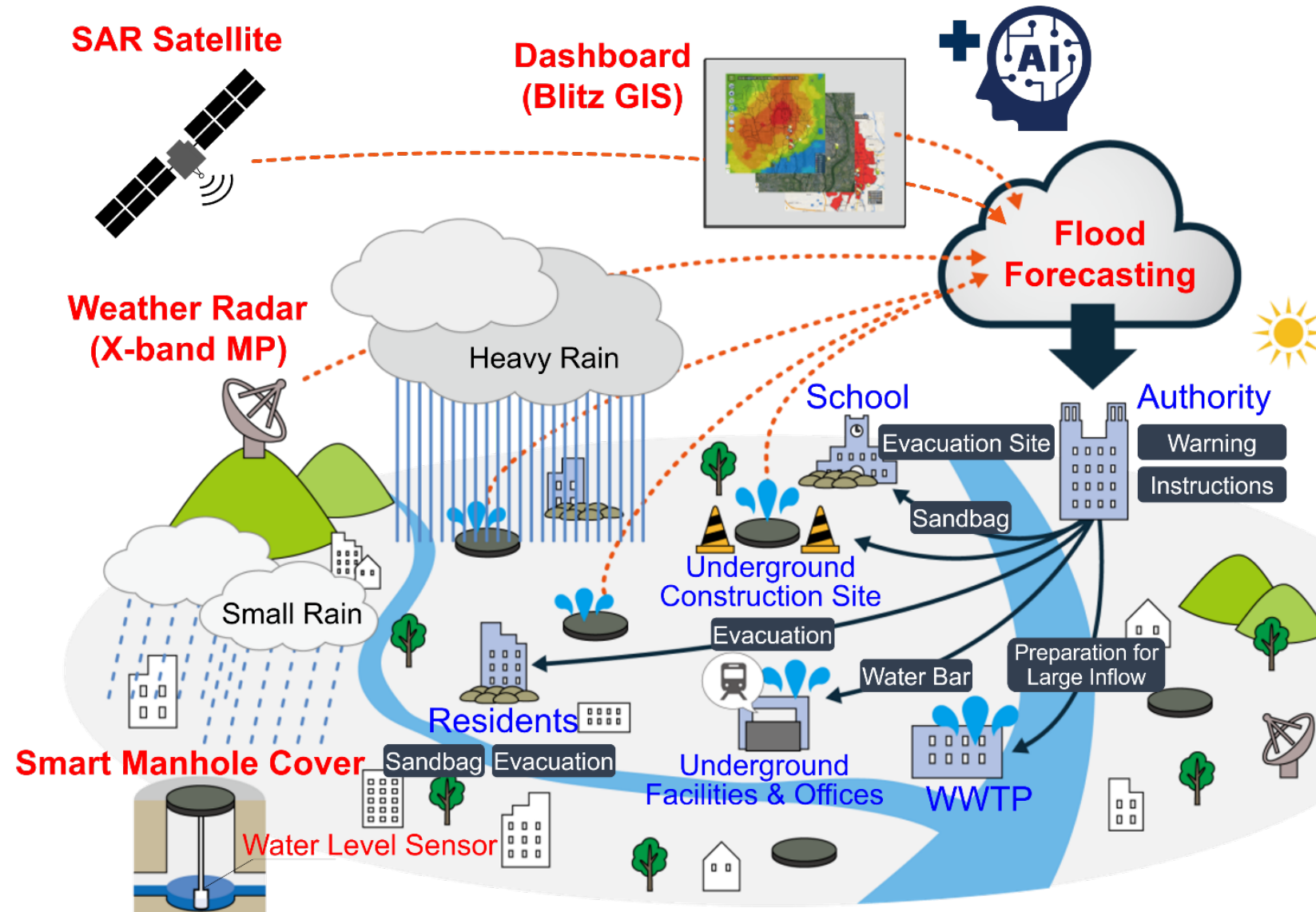


**Hydrograph for
Water Level and Rainfall**

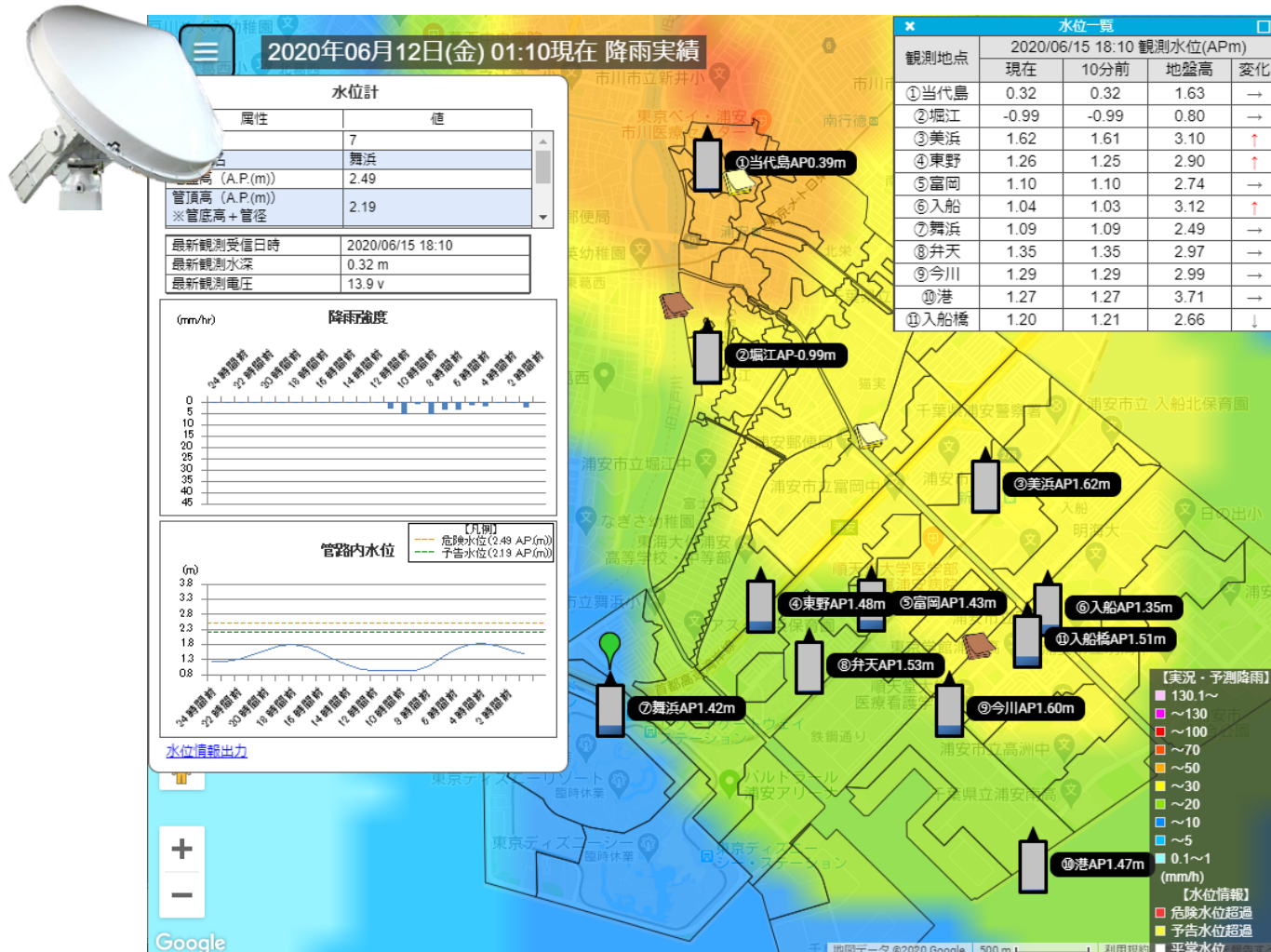


Flood Risk Distribution
(Forecasted by Rainfall and Water Level)

Outline of Stormwater Management System



Dashboard of Stormwater Management System



Alert Notification (E-mail)

Water Level Alert(Tulip Drive: Tul01s)

A Alert@nisuicon-rd-dashboard.link

宛先: ●戸部 達也 (Tobe Tatsuya)

● 保持: アイテム10年保持ポリシー (10年) 有効期限: 2034/10/05 (木) 23:35

The water level has been over the Hazardous Water Level (Pipe Crown Level)

[Over Hazardous Water Level (0.9 m)]

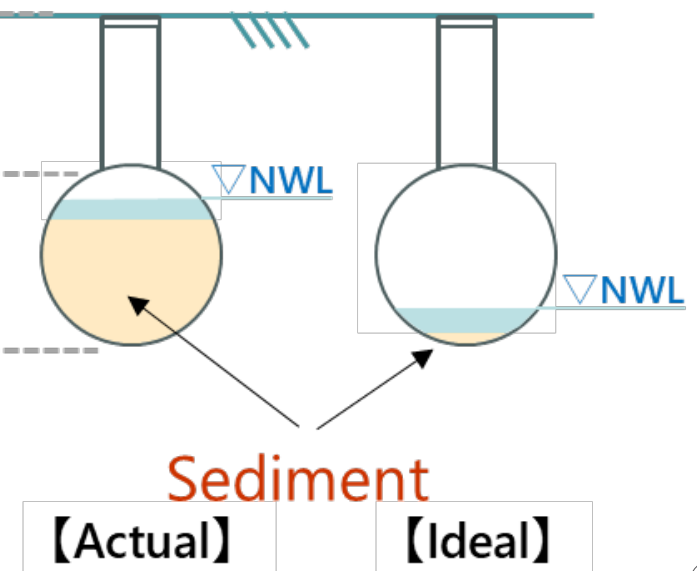
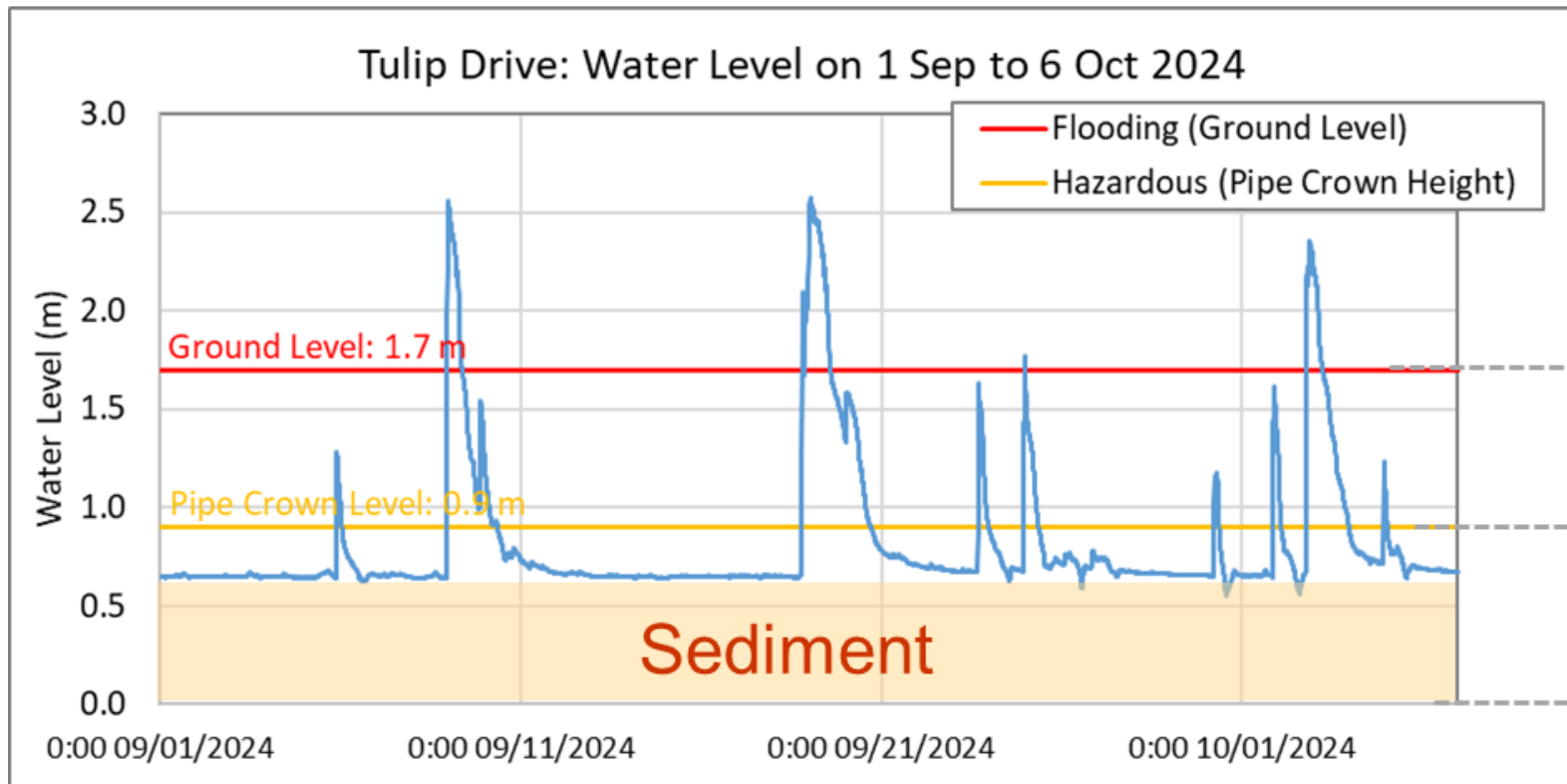
10:30 PM, 07/10/2024 at Tulip Drive: Tul01s, Observed Water Level: 1.127 m

Alert Symbol in Blitz-GIS

Water Level	Condition	Symbol
Flooding	Over Flooding Water Level (Ground Level)	
Hazardous	Over Hazardous Water Level (Pipe Crown Level)	
Normal	Water Flow over 80% of Pipe Crown Height	
	Water Flow over 20% of Pipe Crown Height	
	Water Flow below 20% of Pipe Crown Height	

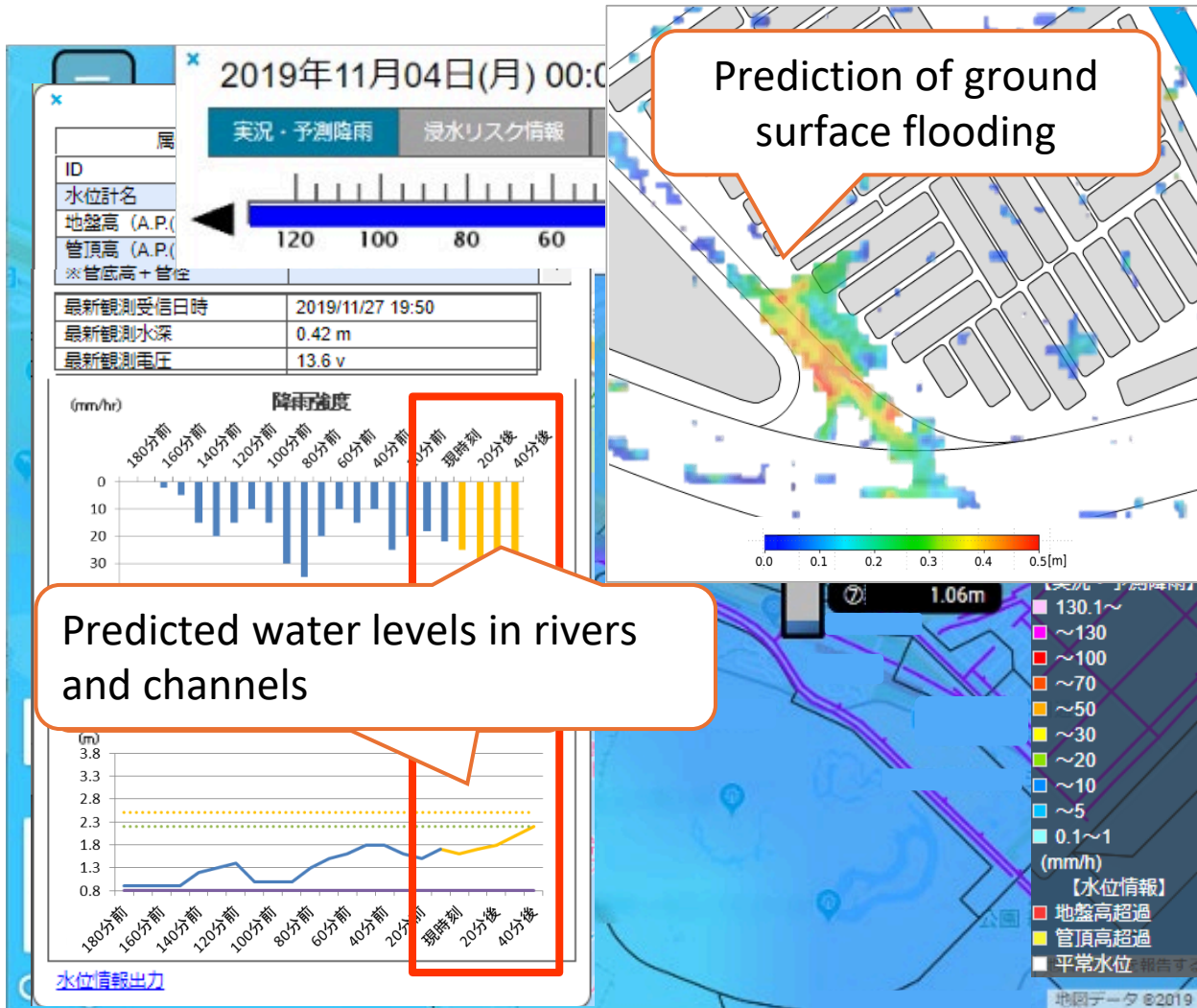
Monitoring Record: Water Level

■ Monitoring of Heavy Flood and Sedimentation



Optional Features

1. Real-time Flood Forecasting



2. Flooded area map using SAR satellite (semi-real time)

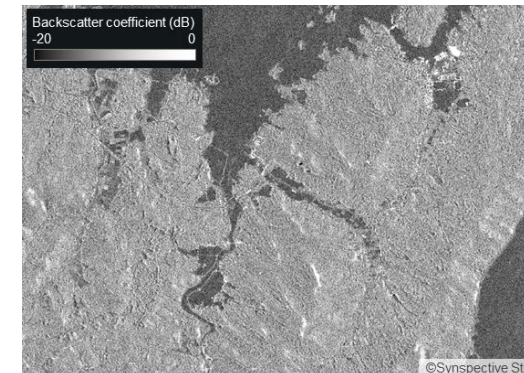
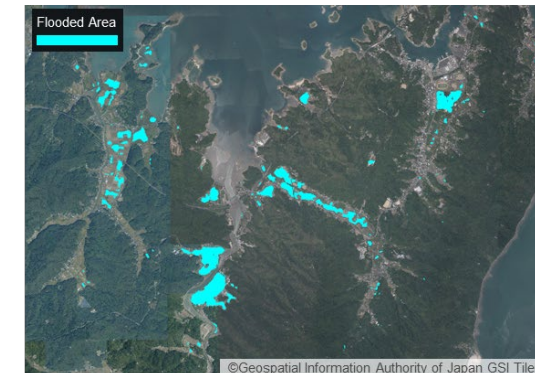


Image captured by StriX during the Flood



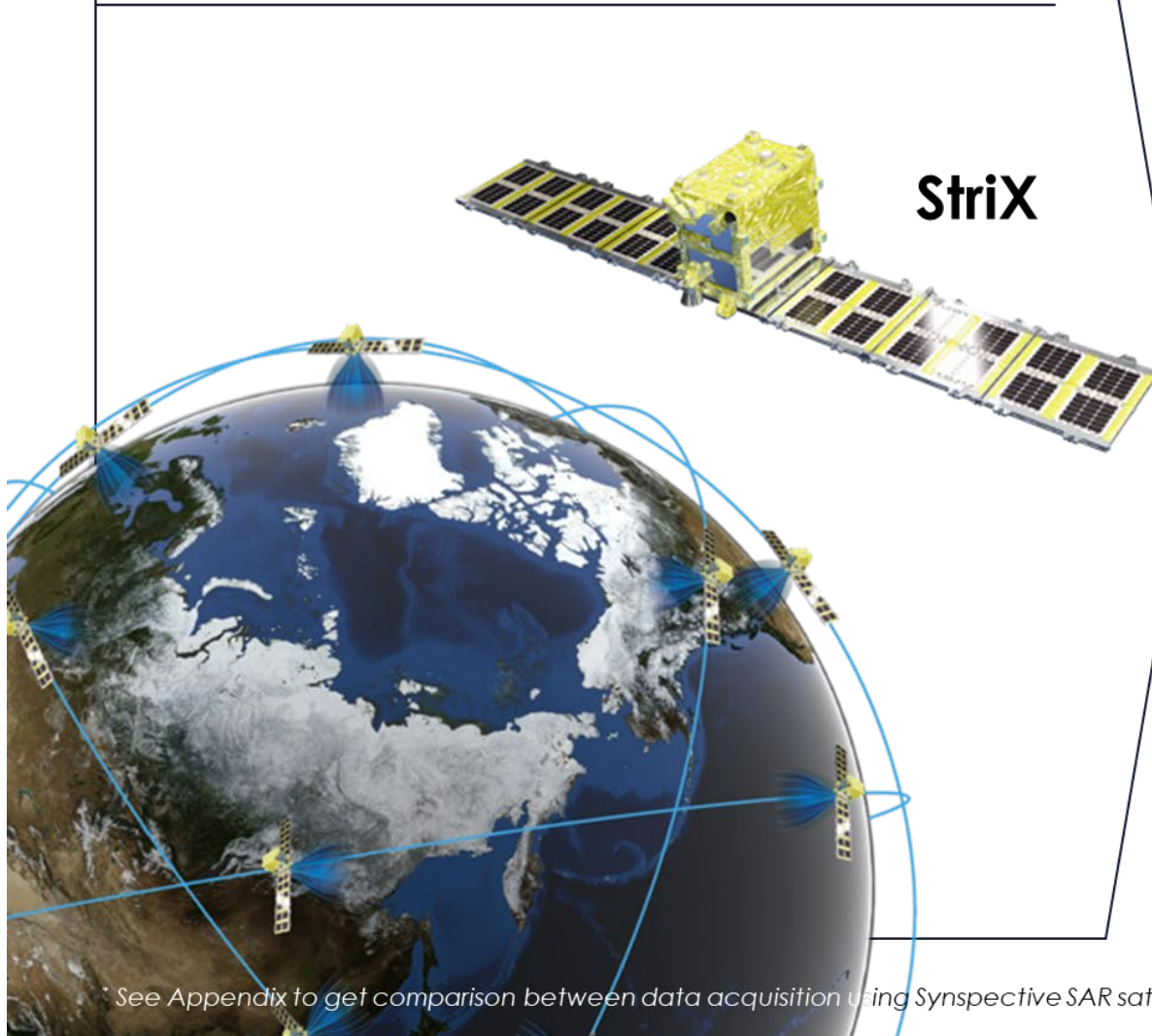
Flooded Area by Satellite Data Analysis

3. Disaster Information from Social Media



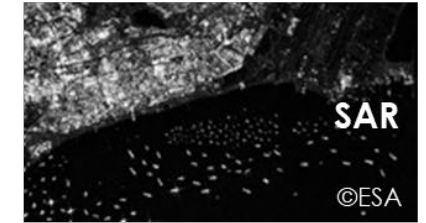
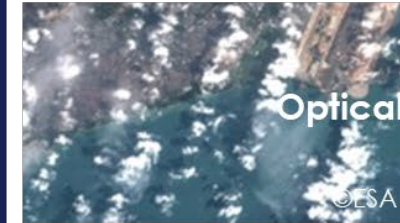
SAR Satellite: StriX

StriX constellation covering Asia & beyond



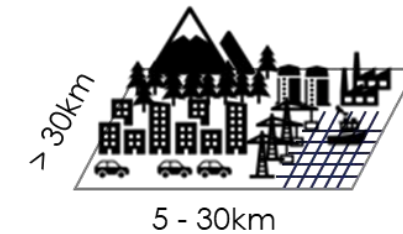
1 Reliability

Captures Earth regardless of weather
absence of sunlight



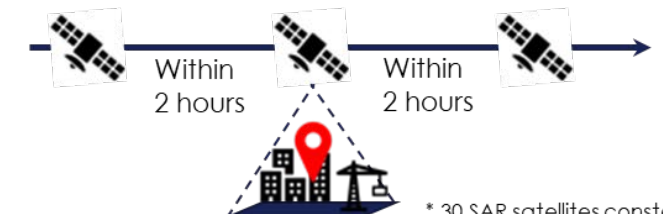
2 Wide area

Captures over 1,000km² area in 3m resolution



3 High frequency

Observes frequently anywhere in the world



* 30 SAR satellites constellation

Flood Damage Assessment by SAR Satellite



Flood Detection in Kumamoto, Japan in August 2025

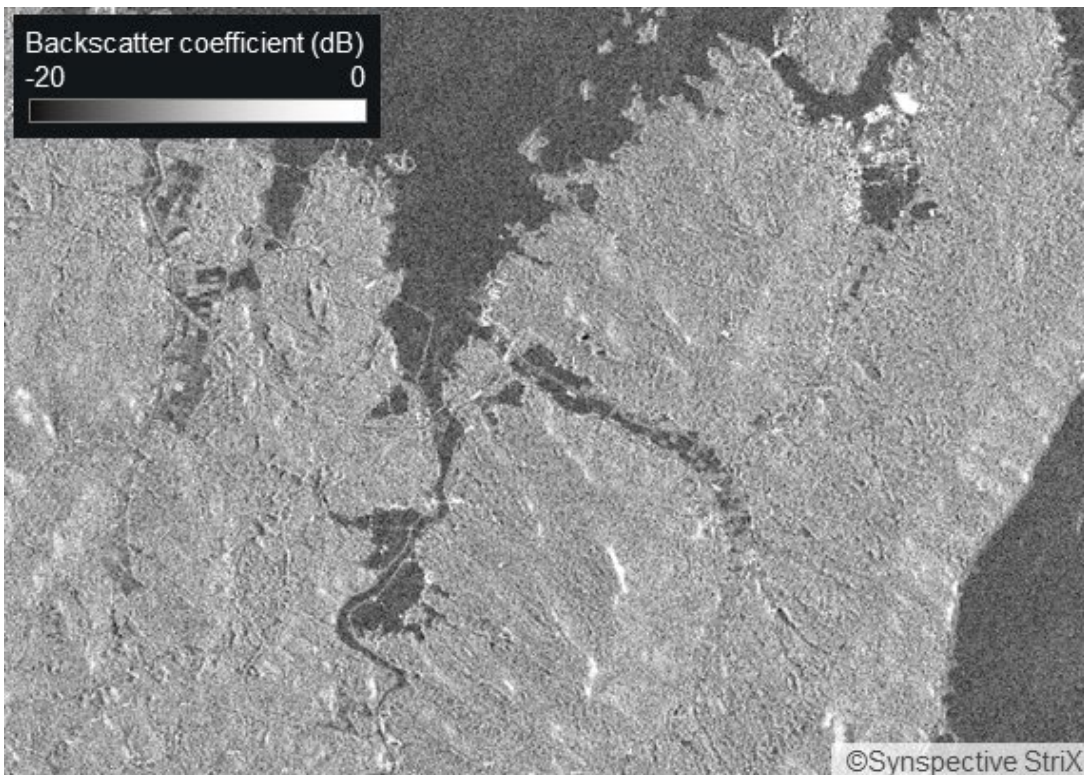
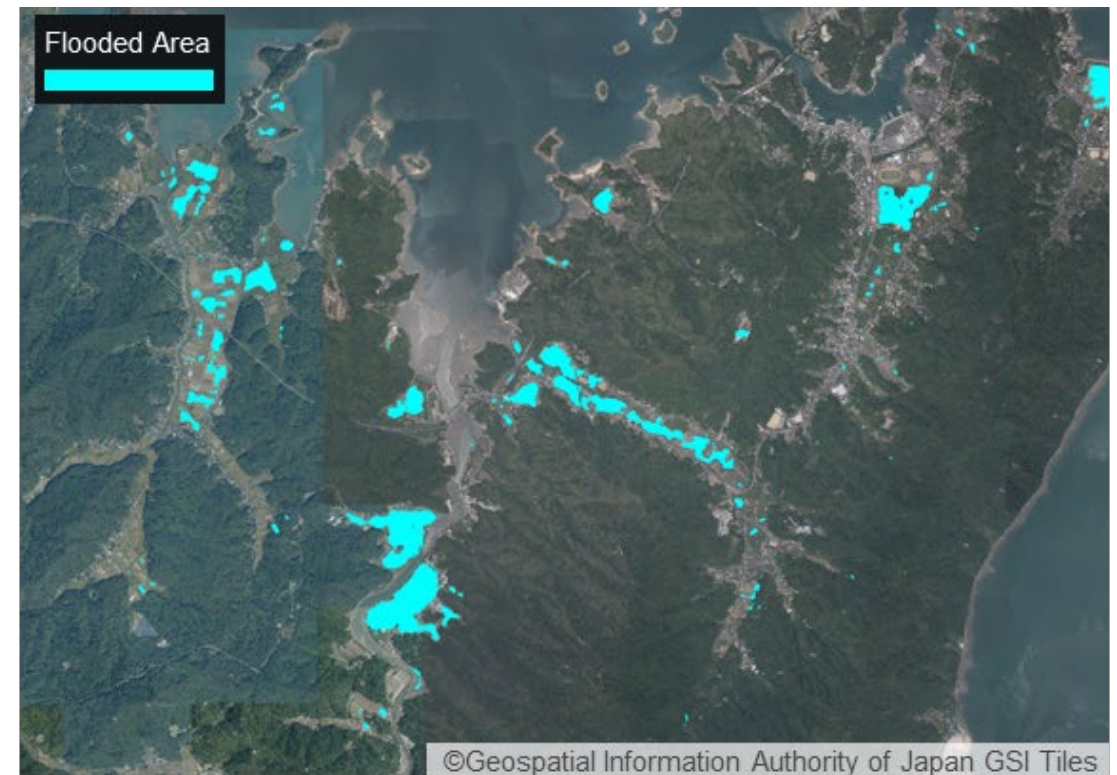


Image captured by StriX during the Flood



Flooded Area by Satellite Data Analysis

Benefits by Stormwater Management System



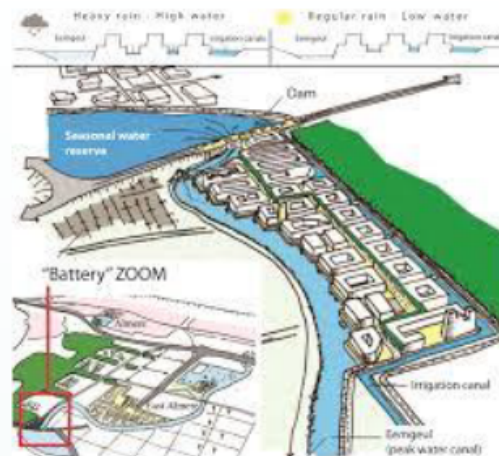
Flood Prevention and Mitigation

- Assessment of flood damage
- Rapid flood response (e.g. effective deployment of operators, pump trucks, water bars and sandbags)
- Disaster recovery response



Flood Control Master Plan and Design

- Improvement of accuracy of flood simulation
- Update of flood control master plan and design for flood control facility



Promotion of Maintenance/Cleaning

- Visualize the sedimentation conditions inside drainage
- Prioritize the drainage for maintenance/cleaning





Nihon Suido Consultants

Head Office:

Address. Shinjuku Square Tower, 6-22-1, Nishi-Shinjuku, Shinjuku-ku,
Tokyo 163-1122, Japan

TEL. +81-3-5323-6200 FAX. +81-3-5323-6480

URL. <https://www.nissuicon.co.jp/en/>